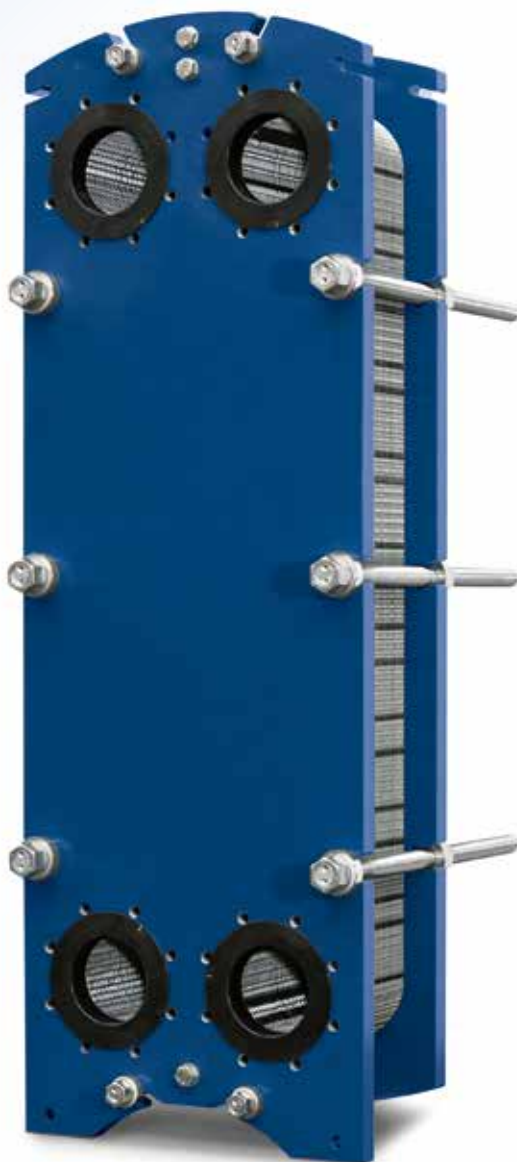


Exchange  
for good

— MADE IN ITALY —



**TAILOR**  **MADE**  
HEAT EXCHANGERS  
**CIPRIANI**

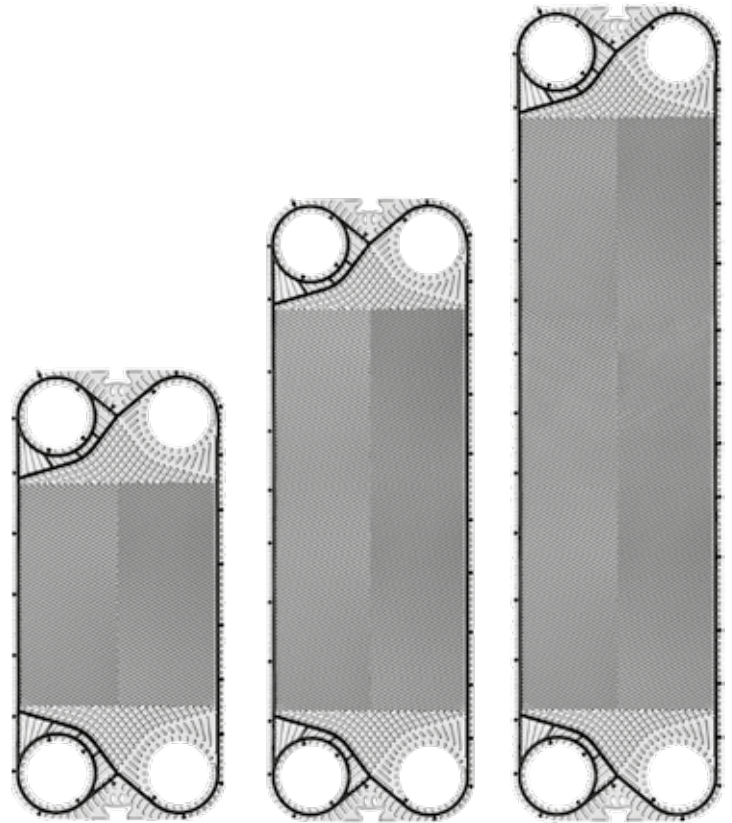
**GAMMA PRODOTTI / PRODUCT RANGE DN 150+**

Standard o Personalizzabili  
*Standard or Customized*



Exchange  
for good

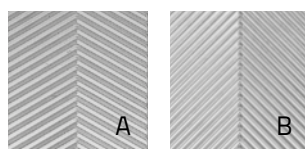
**TAILOR MADE**  
HEAT EXCHANGERS  
**CIPRIANI**



Gamma Prodotti	Product Range	P400+		P600+		P900+	
Area di scambio [m <sup>2</sup> ]	Exchange area [m <sup>2</sup> ]	0,390		0,645		0,900	
Larghezza [mm]	Width [mm]	500		500		500	
Altezza [mm]	Height [mm]	1055		1503		1951	
Diametro attacchi	Connections diameter	DN150 6"		DN150 6"		DN150 6"	
Capacità canale [l]	Channel capacity [l]	1,122		1,659		2,197	
Quota di serraggio [mm]	Tightening quote [mm]	3,1		3,1		3,1	
Peso piastra (con guarnizione) [Kg]	Plate weight (with gasket) [Kg]	1,93		2,86		3,79	
Angolo di corrugazione	Corrugation angle	A/B		A/B		A/B	
Portata max d'acqua [m <sup>3</sup> /h]	Max. water flowrate [m <sup>3</sup> /h]	380		380		380	
PS=> Pressione max di esercizio [bar]	PS=> Max working pressure [bar]	10	16	10	16	10	16

Ex art. 3.3 D.Lgs. 93 del 25/02/2000 in applicazione Direttiva 97/23. I valori di pressione indicati si riferiscono a piastre AISI 316L.

Ex art. 3.3 D.Lgs. 93 of 25/02/2000 in accordance with Directive 97/23/CE. Announced pressures are referred to AISI 316L plates.



Piastre disponibili in due lunghezze termiche (A/B)

Plates are available in two thermal lengths (A/B)

DN32

DN50

DN65

DN100

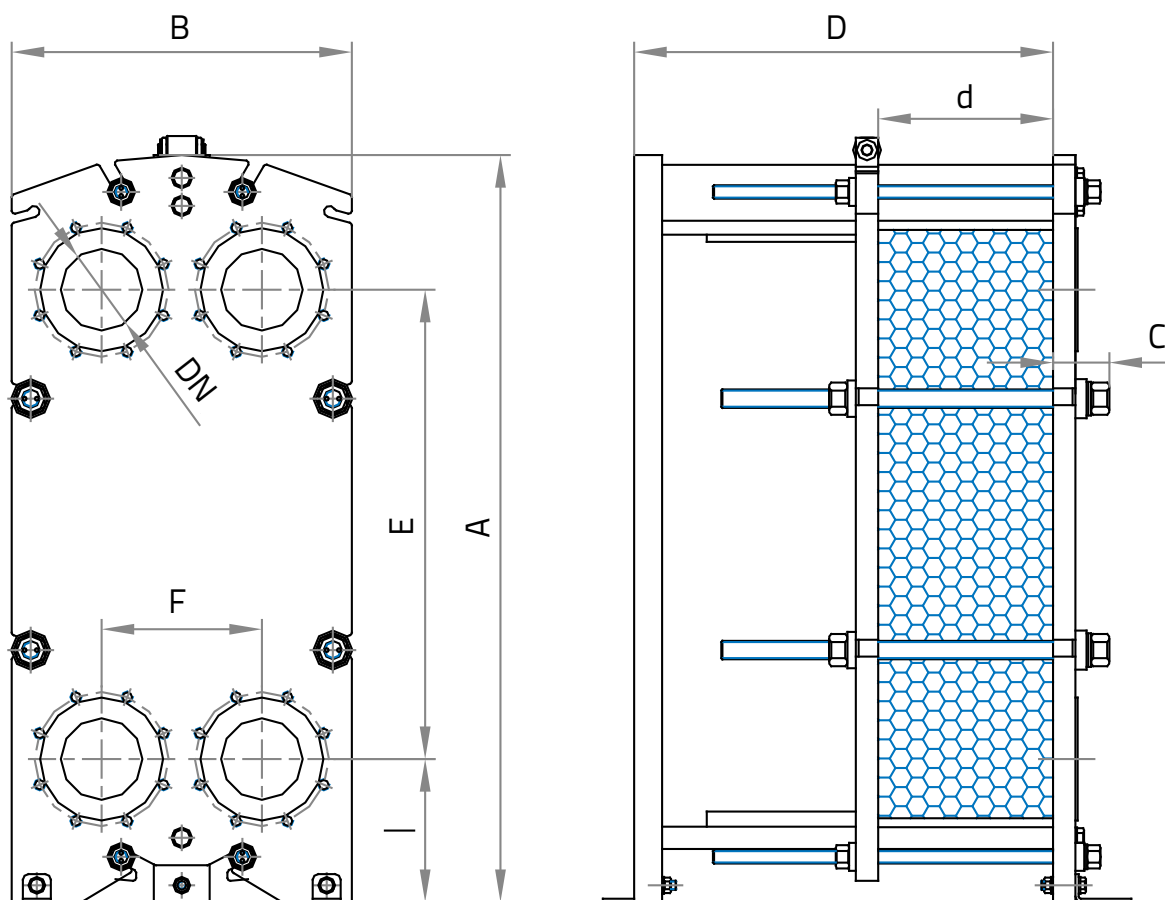
DN150

DN200

Tutti i dati e disegni nel presente documento possono subire variazioni senza preavviso e non sono vincolanti per il produttore.

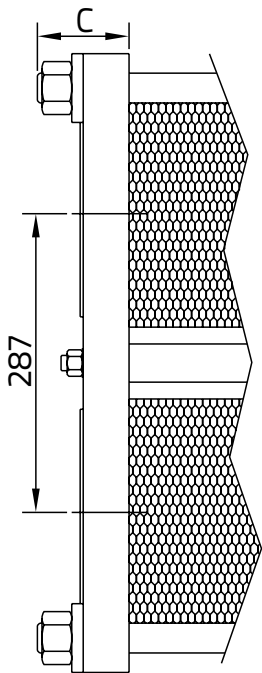
All data and drawings herewith described can be changed without prior notice and are not binding for the manufacturer.

## DIMENSIONI TELAI / FRAMES DIMENSIONS



	S400+					S600+					S900+						
A	1337					1785					2272		2317				
B	609					609					609						
E	840					1288					1736						
F	287					287					287						
I	256					256					256						
Np max	101	201	301	401	551	101	201	301	401	551	101	201	301	401	551	701	
D max	750	1250	1750	2250	3050	750	1250	1750	2250	3050	750	1250	1750	2250	3050	3880	
d (A-A)	3,1 x Np					3,1 x Np					3,1 x Np						
DN	DN150 6"					DN150 6"					DN150 6"						
A-A B-B C-C E-E U-U V-V	PS10		PS16			PS10		PS16			PS10		PS16				
C	88		98			88		98			88		98				

Tutte le dimensioni sono in mm - Np = numero di piastre. All dimensions are in mm - Np = number of plates.



**A-A**

A flangiare EN 1092-1 con manichette in gomma.

*Studded ports Rubber lining EN 1092-1.*

**B-B**

A flangiare EN 1092-1 con manichette AISI 316.

*Studded ports AISI 316 lining EN 1092-1.*

**U-U**

A flangiare EN 1092-1 senza manichette.

*Studded ports Unlined EN 1092-1.*

**C-C**

A flangiare ANSI (fil. metrica) con manichette in gomma.

*Studded ports Rubber lining ANSI (metric thread).*

**E-E**

A flangiare ANSI (fil. metrica) con manichette AISI 316.

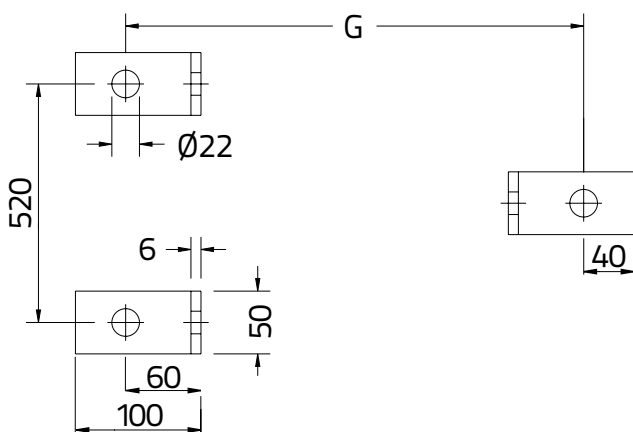
*Studded ports AISI 316 lining ANSI (metric thread).*

**V-V**

A flangiare ANSI (fil. metrica) senza manichette.

*Studded ports Unlined ANSI (metric thread).*

PIEDINI / FEET



G	PS10	PS16
<b>S400+ / S600+ / S900+</b>		
Max 101p	866	876
Max 201p	1366	1376
Max 301p	1866	1876
Max 401p	2366	2376
Max 551p	3166	3176
G	PS10	PS16
<b>S900+</b>		
Max 701p	3983	3983

		S400+	S600+	S900+
Piastre Plates	Inox AISI 304	●	●	●
	Inox AISI 316L	●	●	●
	254 SMO	●	●	
	Titanio / Titanium	●	●	
Guarnizioni Gaskets	NBR	●	●	●
	EPDM Prx.	●	●	●
	FPM	●	●	●
	HNBR	●	●	●
Telai Frames	Acciaio Carbonio / Carbon steel	●	●	●
	AISI 304, rivestito / clad			
Attacchi Connections	A-A B-B C-C E-E U-U V-V	●	●	●

**Materiali guarnizioni e temperature massime**  
*Gaskets material maximum temperatures*

NBR	-20 °C	110 °C
EPDM Prx.	-20 °C	160 °C
FPM	-20 °C	200 °C
HNBR	-20 °C	160 °C

Le temperature devono essere considerate non applicabili in tutte le condizioni di lavoro.  
*The temperatures must be considered not applicable in all working conditions.*



Valori **su misura** per voi.  
*Values **made** for you.*

Competenze globali  
*Global expertise*

Flessibilità  
*Flexibility*

Team dedicato  
*Dedicated team*

Standard qualitativi  
*Quality Standards*



Pressure plate  
Piastrone mobile

Plate pack  
Pacco piastre

Carrying bar  
Guidapiastre superiore

Initial plate  
Piastra iniziale

Conessioni  
Attacchi

Frame plate  
Piastrone fisso

Lining  
Manichette

Feet  
Piedini

Guiding bar  
Guidapiastre inferiore

Column  
Colonna

Final plate  
Piastra finale

Tightening bolts  
Tirante

CERTIFICATIONS APPROVALS



ACS  
Attestation de Conformité Sanitaire

OHSAS 18001  
Occupational Health and Safety

ISO EN 9001:2015  
European Quality Certificates

PED 2014/68/UE  
Pressure Equipment Directive  
Module B,D1 & D (up to Risk Cat. IV)



WRAS  
EPDMprx gasket compound approved



ISO 14001  
Environmental Management



Exchange  
for good

Via Nassar, 46 - 37026 Pescantina (VR)  
Tel. +39 045 6750065 • Fax +39 045 6750118  
info@cipriani-phe.com  
cipriani-phe.com